



Optional Green LED Display

4 DIGIT with 0.56" LEDs  
in a NEMA type 1 Style Case

## UM-40-ACV 600.0V AC Meter

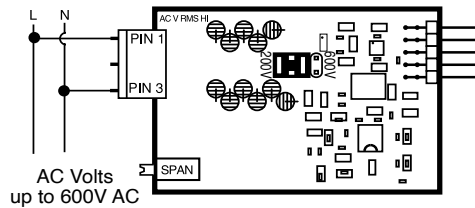
A utility meter for high resolution AC volts measurement with safe resistively isolated differential inputs.

### General Features

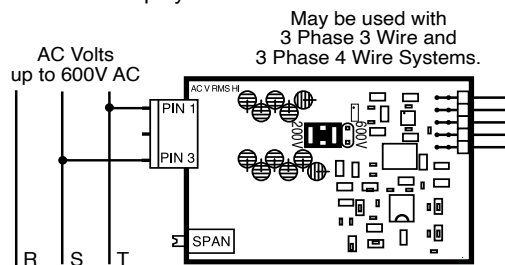
The UM-40-ACV is a cost-effective, utility, AC voltage measuring meter with range of 0 to 600.0V AC. The unique resistively isolated differential input of this meter allows safe measurement of phase to phase voltages, making it a effective solution to most high resolution AC voltage measuring applications.

### Typical Application Connections

**AC True RMS Voltage measurement in Single-phase Systems.**  
Maximum display of 600.0V AC.



**AC True RMS Phase to Phase Voltage measurement in Multi-phase Systems.**  
Maximum display of 600.0V AC.



The unique differential input allows safe phase to phase AC true RMS line voltage measurements up to 600V AC.

### Specifications

**Input Configuration:** ..... Differential input. Inputs resistively isolated to 1400V from internal ground of meter by 1.94MΩ, so that phase to phase measurements up to 600V AC can be safely made.

**Full Scale Ranges:** ..... 600V AC full scale

**Input Impedance:** ..... 4MΩ minimum.

**A/D Converter:** ..... 16 Bit Dual Slope

**Accuracy:** ..... ±(0.05% of reading + 3 counts)

**Temperature Coefficient:** 100 ppm/°C (Typical)

**Warm Up Time:** ..... 2 minutes to specified accuracy

**Conversion Rate:** ..... 3 conversions per second (Typical)

**Display:** ..... 4 digit 0.56" Red LED display (standard), Green or Super Bright Red (optional). Range 0 to 9999 counts.

**Decimal Selection:** ..... Header under face plate, X•X•X•X•

**Overrange Indication:** ..... Display flashes "0000"

**Power Supply (PS6M):** ..... 120/240V AC, 50/60Hz. approx 1.5W.

**Operating Temperature:** ..... -10 to 50 °C

**Storage Temperature:** ..... -20 to 70 °C.

**Relative Humidity:** ..... 95% (non-condensing)

**Case Dimensions:** ..... Bezel 3.78"Wx1.89"H (96Wx48Hmm)  
Depth behind bezel 3.36" (85.3 mm) Plus 0.5 to .9" (12.7 to 22.8mm) depending on connector used.

**Weight:** ..... NW. 12oz (0.34kg)

15.6oz (0.44kg). when packed.

### UM-Series utility meters for switchboard and process indication

**UM-35-ACA** ..... AC amps, True RMS, (1 or 5 Amp internal shunt), 3.5 digit.

**UM-35-ACV** ..... AC volts, True RMS. 199.9V AC/600V AC header selectable ranges, 3.5 digit.

**UM-35-DCA** ..... DC mV ±20mV/±50mV/ ±100mV/±200mV header selectable ranges, 3.5 digit

**UM-35-DCV** ..... DC Volts ±2V/±20V/±200V DC header selectable ranges, 3.5 digit..

**UM-40-ACV** ..... AC volts, True RMS. 200.0V AC/600.0V AC header selectable ranges, 4.0 digit.

**UM-45-DCA** ..... DC mV ±20mV/±50mV/ ±100mV/±200mV header selectable ranges, 4.5 digit

**UM-45-DCV** ..... DC Volts ±2V/±20V/±200V DC Header selectable ranges, 4.5 digit.

**UM-35-CL** ..... Process 4 to 20mA (100.0), easily user scalable in engineering units from -1999 to +1999. 3.5 digit

**UM-35-HZ** ..... 15Hz to 199.9Hz or optional 40Hz to 400Hz up to 500V AC , 3.5 digit.

**UM-35-SG** ..... Pressure, strain gage and load cell, 4 and 6 wire, 5V DC excitation, Header Selectable Sensitivity 2mV/V, 5mV/V, 10mV/V, 20mV/V, 3.5 digit

**UM-35-TC-J** ..... J thermocouple input, 1° resolution, order °C or °F, 3.5 digit

**UM-35-TC-K** ..... K thermocouple input, 1° resolution, order °C or °F, 3.5 digit

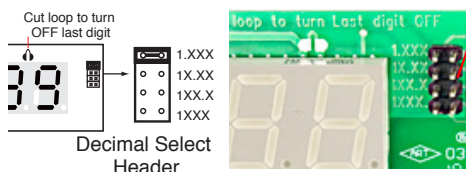
**UM-35-RTD** ..... 100Ω platinum RTD, 3 or 4 wire, order °C or °F and 0.1° or 1°, 3.5 digit

## Calibration Procedure

1. Select the required full scale voltage range by re-positioning the jumper clip on the Range Select Header. A range of 200.0V AC or 600.0V AC full scale may be selected.
2. Apply an input of 0 Volt AC to the meter by shorting the inputs. The meter will auto zero and display zero.
3. Apply a known high input signal that is within the full scale voltage range selected.
4. Adjust the Span Pot until the meter displays the required reading for the signal being applied.
5. The UM-40-ACV is now calibrated and ready for use.  
(Whenever a new range is selected, re-calibration is required to meet the specified accuracy).

## Decimal Point Selection

Decimal selection is made by moving the jumper to the indicated position on the header for the decimal required on the front of the display board.



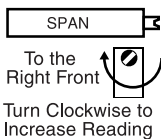
To open meter, insert a flat head screwdriver or similar instrument in both slots on the side of the cover and pry open. The UM-Series meters slide out from the front of the case as a complete assembly.

## Signal Conditioning Components

### INPUT RANGE Header



Range values are marked on the PCB. Two positions are provided. After selecting a new range with the single jumper clip, re-calibration is required.



### SPAN Potentiometer (Pot)

The 15 turn SPAN pot is always on the right side (as viewed from the front of the meter). Typical adjustment is 20% of the input signal range.

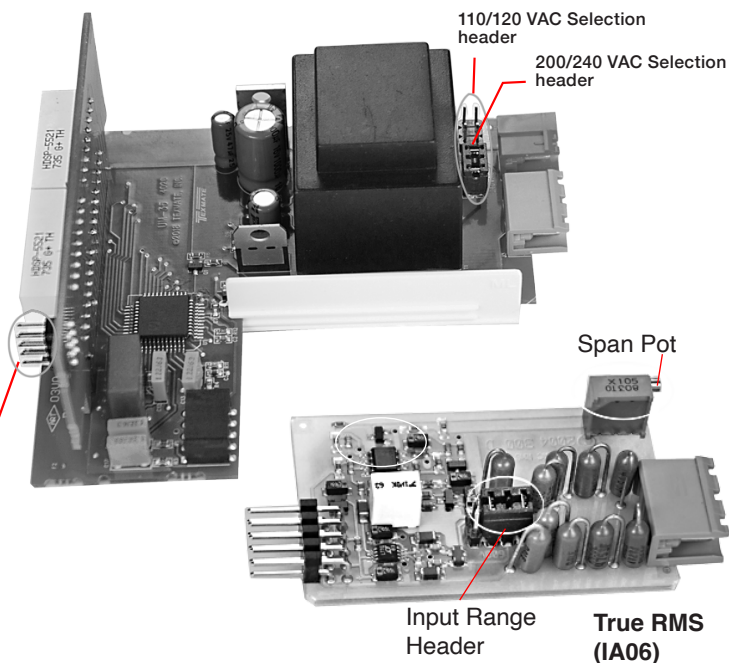
## Optional Face Plate Descriptors

AC	V	12	kV	kVAR	m/hr	H <sub>2</sub>	RPM
V	mV	min	PF	F	G	Co <sub>2</sub>	
DC	10kN	μA	PSIG	mS	kg/cm <sup>2</sup>	psi	
kW	W	kWH	pH	%	K	kPa	
A	mbar	mA	MW	kA	RPS	MW	
mWs	μm	kWs	I	l/sec	ml	cm	
DRP	mm/s	l/min	mm	kg/sec	lbs	kg/hr	
PSI	bars	min	m/min	Mvars	μV	dB	

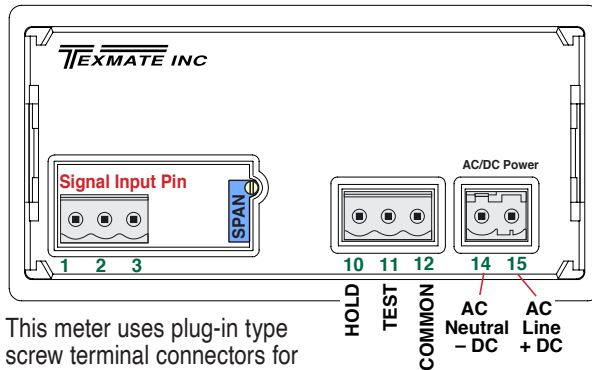
To customize the face plate, clear adhesive label containing various popular descriptors may be ordered. Choose the descriptor desired, peel off the adhesive backing and align the descriptor in the center right of the faceplate.

P.N.: 75-DESCRIPTR

## Component Layout



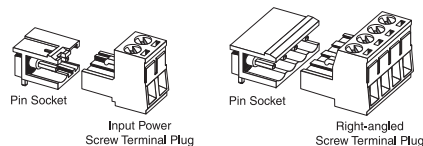
## Connector Pinouts



This meter uses plug-in type screw terminal connectors for all connections.

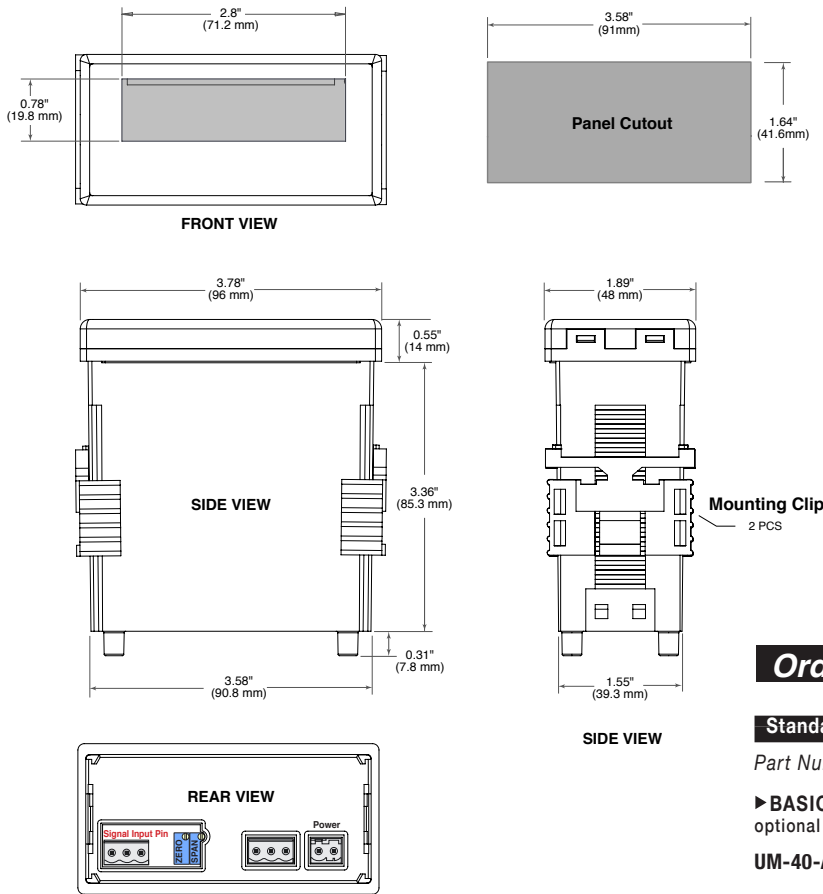
## Connectors

This meter uses plug-in type screw terminal connectors for all input and output connections. The power supply connections (pins 14 and 15) have a unique plug and socket outline to prevent cross connection. The main board uses standard right-angled connectors.



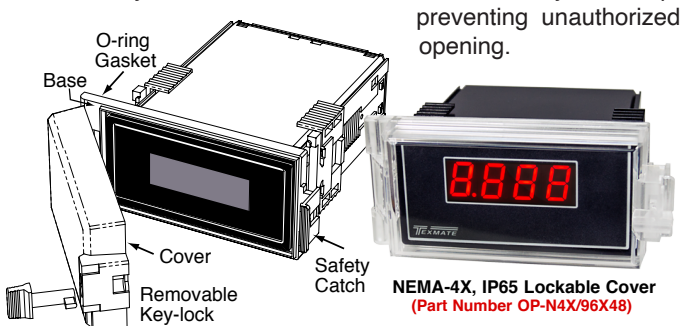
**WARNING:** AC and DC input signals and power supply voltages can be hazardous. Do Not connect live wires to screw terminal plugs, and do not insert, remove or handle screw terminal plugs with live wires connected.

## UM Case Dimensions and Panel Cutouts



## Clear Lockable Water-proof Cover

The clear lockable cover is designed to be dust and waterproof to NEMA-4X, IP65 standards. The assembly consists of a base and a cover with a cam hinge and key-lock fastening mechanism. An O-ring, or neoprene gasket forms a seal between the base and the panel. The cam hinge prevents the cover from closing when opened until pushed closed. The cover has a tapered recess that, when closed, forms a seal with a tapered spigot on the base. A key-lock employs a cam locking device to force the spigot into the recess, ensuring seal integrity. A safety catch keeps the cover closed even when the key is removed, and the keyhole can be used to attach a safety seal clip,



1934 Kellogg Ave., Carlsbad, CA 92008  
 Tel: 1-760-598-9899 • USA 1-800-839-6283 • 1-800-TEXMATE  
 • Email: orders@texmate.com • Web: www.texmate.com

## Warranty and User's Responsibility

### WARRANTY

Texmate warrants that its products are free from defects in material and workmanship under normal use and service for a period of one year from date of shipment. Texmate's obligations under this warranty are limited to replacement or repair, at its option, at its factory, of any of the products which shall, within the applicable period after shipment, be returned to Texmate's facility, transportation charges pre-paid, and which are, after examination, disclosed to the satisfaction of Texmate to be thus defective. The warranty shall not apply to any equipment which shall have been repaired or altered, except by Texmate, or which shall have been subjected to misuse, negligence, or accident. In no case shall Texmate's liability exceed the original purchase price. The aforementioned provisions do not extend the original warranty period of any product which has been either repaired or replaced by Texmate.

### USER'S RESPONSIBILITY

We are pleased to offer suggestions on the use of our various products either by way of printed matter or through direct contact with our sales/application engineering staff. However, since we have no control over the use of our products once they are shipped, **NO WARRANTY WHETHER OF MERCHANTABILITY, FITNESS FOR PURPOSE, OR OTHERWISE** is made beyond the repair, replacement, or refund of purchase price at the sole discretion of Texmate. Users shall determine the suitability of the product for the intended application before using, and the users assume all risk and liability whatsoever in connection therewith, regardless of any of our suggestions or statements as to application or construction. In no event shall Texmate's liability, in law or otherwise, be in excess of the purchase price of the product.

Texmate cannot assume responsibility for any circuitry described. No circuit patent or software licenses are implied. Texmate reserves the right to change circuitry, operating software, specifications, and prices without notice at any time.

## Ordering Information

### Standard Options for this Model Number

Part Number Description

► **BASIC MODEL NUMBER** standard display and standard power supply unless optional versions are ordered.

**UM-40-ACV.....** AC Volts, True RMS 200.0/600.0V AC 1A06 .....

### ► DISPLAY

**DR .....**0.56" Red LEDs .....

**DB .....**Super bright Red LEDs, 0.56 inch high .....

**DG .....**Green LEDs, 0.56 inch high .....

### ► POWER SUPPLY

**PSM1 .....**100/120 VAC 50/60Hz User selectable. ....

**PSM2 .....**200/240 VAC 50/60Hz User selectable .....

### Special Options and Accessories

Part Number Description

► **SPECIAL OPTIONS (Specify Inputs & Req. Reading)**

**ZR.....**Range Change from Standard Range shown in **BOLD** .....

**ZS.....**Custom display scaling within standard ranges .....

### ► ACCESSORIES

**OP-N4X/96X48**.96x48mm clear lockable front cover NEMA 4X, splash proof

**CASE.RPUM.....**Case: Replacement with Accessories .....

**75-DTP2X9624** Panel cutout metal trim plate 96x48mm .....

**ART-NRC-DEC**.NRC for Artwork & set-up Custom Faceplate and/or Descriptor

**ART-FS1 .....**Produce & Install Custom Faceplate per meter - 1 color no-min

**75-DESCRIPTR**.Clear adhesive descriptors label for face plate .....

**93-PLUG2P-DP**.Extra Screw Terminal Connector, 2 Pin Power Plug. ....

**93-PLUG2P-DR** Extra Screw Terminal Connector, 2 Pin Plug .....

**93-PLUG3P-DR** Extra Screw Terminal Connector, 3 Pin Plug .....

## Custom Face Plates

**Texmate Produces Thousands of Custom OEM Face Plates.** Have Texmate Design and produce a Custom Face Plate for your next project!

• Custom face plates have a non-recurring artwork charge. A serial number is then assigned to each artwork to facilitate reordering.

**UM-40-ACV Technical Manual Copyright © 2025 Texmate Inc. All rights reserved. Published by: Texmate Inc. USA. Information in this Technical Manual is subject to change without notice due to correction or enhancement. The information described in this manual is proprietary to Texmate, Inc. and may not be copied, reproduced or transmitted, in whole or in part, in connection with the design, manufacture, or sale of apparatus, device or private label product without the express written consent of Texmate, Inc.**